

Some states do not allow the exclusion or litigation of incidental or consequential damages, or limitations on how long an implied warranty lasts, so the exclusions may not apply to you. This Limited Warranty gives you specific legal rights and you may also have other rights which vary from state to state. If a problem with our product develops during or after the warranty period, and is not handled to your satisfaction, then write to "attn: Customer Satisfaction" at the address listed below.

Parts and service which are not covered by this limited warranty are your responsibility.

Contact Information:

Walker Global LLC
9534 Redbud Lane
Lenexa, KS 66220 USA
Phone: 913-488-4840
info@windmywatch.com
www.windmywatch.com



Owner's Manual



A comprehensive guide to exploring your new software programmable watch winder.

Table of Contents

| | |
|---------------------------------------|----|
| Thank You! | 3 |
| Unpacking Your Winder | 3 |
| Important Notes! | 4 |
| Winder Front Panel | 4 |
| Watch Pillows | 5 |
| LED Displays | 7 |
| Additional Features | 9 |
| Winder Back Panel | 9 |
| Warranty VOID sticker | 10 |
| USBWinder Software Installation | 11 |
| Connecting the Winder | 11 |
| Programming the Winder | 12 |
| Turning Off the Winder | 14 |
| Turning Off the LED Displays | 14 |
| Winder Care | 14 |
| Winder Cleaning | 14 |
| Limited Warranty | 15 |
| Contact Information | 16 |

LIMITED WARRANTY:

Your new Rotolution™ winder is warranted for 12 months from the date of your purchase. We warrant that your new Rotolution™ winder is free of any defect in materials or workmanship. The warranty is limited to sellers and original consumer purchasers. In the event of a defect, malfunction or failure to conform with our written warranty, we will at our cost and in our discretion , repair or replace any non-functioning or defective part with new or refurbished parts. You are responsible for packing the unit, shipping to our offices and all shipping costs. The unit should be accompanied with proof of purchase including proof of the original purchase date and a written explanation of the problem or symptoms. Please make certain your name and address are shown both on the outside of the package as a return address and on the inside correspondence. Always insure the package to protect yourself in case of loss in transit and to make tracing possible if necessary.

For warranty claims, parts or service, please contact us at “attn: Service Department ” at the address listed below. Most issues can be quickly and easily resolved by talking to one of our technicians. Please also check our website periodically for new software updates and additional information regarding our winder products.

The following are NOT covered by the Limited Warranty:

- (1) Normal wear and tear;
- (2) Scratches, stains, broken parts, cracked or broken glass, or other cosmetic damage; or
- (3) No two pieces of cloth, leather, or wood are alike. As such, color or surface finish variations, distinguishing marks, natural markings and grain variations are not considered defects and you accept terms as such.
- (3) Any damage due to abuse, neglect, misapplication, alteration, power surge, lightning damage, modification, commercial use, mishandling by customers, service by other than us, or acts of God.
- (4) Opening of the unit by anyone other than an authorized Rotolution™ technician will immediately void the Warranty. See “Warranty VOID” sticker section in your owner’s manual

THERE ARE NO EXPRESS WARRANTIES EXCEPT AS DESCRIBED ABOVE. WE ARE NOT LIABLE FOR INCIDENTAL OR CONSEQUENTIAL DAMAGES RESULTING FROM THE USE OF OUR PRODUCT, OR ARISING OUT OF A BREACH OF THIS WARRANTY. ALL EXPRESS AND IMPLIED WARRANTIES, INCLUDING THE WARRANTY OF MERCHANTABILITY, ARE LIMITED TO THE PERIOD OF THE LIMITED WARRANTY.

TURNING OFF THE WINDER:

To turn **OFF** a **single winder head and its corresponding LED display**, connect the winder to your PC (as described in this manual), launch the USBWinder software, and click the “OFF” button (located next to “Winder Head Power:”) Doing so will disable the selected winder head and its LED display.

To turn **OFF** the **entire winder unit**, switch the power on/off switch, located on the back of the winder, to the “OFF” position. The winder will always retain the last program it was given.

TURNING OFF THE LED DISPLAYS:

Should the enabled LED displays become distracting, you can turn them off manually at any time by using the LED display on/off switch located on the back of the unit.. This switch works independently of the winder power ON/OFF switch, and you may turn the LED displays back on at any time without affecting the operation of the winder.

Note: The winder will continue to operate normally while the LED displays are turned off. Typical reasons for turning OFF the LED displays would be for power savings, or if the light given off by the LED displays becomes distracting (such as at night, while trying to sleep)

WINDER CARE:

Your winder is a precision instrument. Please treat it as such. Do not stop spinning winder heads with your fingers. Do not remove or insert watch pillows while the winder is rotating. Do not rotate the watch cup by hand. Doing any of the above will damage the winder motor. Motor damage is not covered by the Warranty. Be careful handling glass doors, as they can break if mishandled.

Only use the AC power adapter that came with your winder! We WILL NOT guarantee the safety or compatibility of any other AC power adapter.

WINDER CLEANING:

For exterior surfaces use a soft, clean, lint-free cloth moistened with a **NON-ABRASIVE** high quality wood or furniture polish.

For cleaning glass doors, use a soft, clean, lint-free cloth moistened with **NON-ABRASIVE** glass cleaner.

For interior surfaces and watch pillows, a common lint roller works well at removing dust, dirt, or lint that may accumulate over time.

Welcome to the new revolution in time!

Thank You for your purchase!

You now own the latest in watch winding technology! Your winder has been carefully designed to provide unlimited flexibility and trouble-free service.

Should you have any questions or comments regarding your new winder, please do not hesitate to contact us.

BEFORE attempting to use your new winder, please read this manual carefully!

UNPACKING YOUR WINDER:

Please take care when unpacking your new winder, as the doors are made of glass and can break if mishandled. Once you have unpacked your winder, please verify that all items below are included.

You should have the winder (A), the USB cable for connecting the winder to your PC (B), the USBWinder software installation disk (C), a printed owner’s manual (D), the AC power adapter (E), and keys for the door lock. (F) (Fig.1)



(Fig. 1) Unpacking your winder

If you are missing any of the items, please contact us immediately and we will be happy to assist you obtaining replacements.

IMPORTANT NOTES:

Helpful tips are given throughout this manual. They are shown in **BOLD**, and may start with the word **Note:** Please pay close attention to these highlighted suggestions.

WINDER FRONT PANEL:

Many of our models are capable of winding more than one watch at the same time. These individual winders are referred to as **winder heads** in this manual.

For example, the model shown in (Fig. 2) contains two **winder heads** labeled **(1)** and **(2)** respectively. Other models may contain a different number of winder heads, but their operation is identical.



(Fig.2) Individual Winder Heads

Additionally, many of our winder models feature hinged glass doors with individually keyed locks. This helps protect the contents from unauthorized handling or tampering. Typically, two keys are provided. **Please remove the extra key and store it in a safe place.**

Note: Your new USBWinder software is intelligent. It will automatically recognize the layout of the winder you have connected to your computer. Non-selectable winder heads will be “grayed-out” automatically.

- 3) Ensure that the winder head is activated by clicking the **“ON”** button located next to **“Winder Head Power:”**

Note: Should you wish to temporarily disable a winder head (along with its corresponding LED display), simply click the **“OFF”** button. Settings cannot be modified in the **“OFF”** position. To turn a winder head back on, simply click the **“ON”** button.

- 4) Numerically enter your desired TPD setting in the **“Turns Per Day (TPD):”** box. (Minimum TPD is 15, maximum TPD is 6,000)
- 5) Select the desired **“Rotation:”** by clicking on the CW (Clockwise Only), CCW (Counter-Clockwise Only), or Both (Bi-Directional Rotation) box.

Note: The **“Time Elapsed”** and **“Turns Completed”** boxes display the **REAL-TIME** performance data that is being sent from that particular winder head to your computer.

- 6) To send your new setting to the winder head, click the **“Click to Confirm New Setting”** button. The LED display should now reflect your new winder head settings, and the winder head will begin running your new program.

Note: You **MUST** click on the appropriate **“Click to Confirm New Setting”** button for each individual winder head after you have finished making your changes.

Clicking on this button is what actually loads your new setting changes into memory. If you change a setting, but fail to click on the **“Click to Confirm New Setting”** button, the winder head **WILL NOT** receive your new settings!

- 7) Repeat steps **3–6** for each winder head setting you wish to change.
- 8) When you are satisfied with your winder head settings, close the software and unplug the USB cable from your PC and winder.

In the future, when you wish to change your winder settings, simply plug the winder back into the USB port, launch the USBWinder software, and follow steps **3–6** once again.

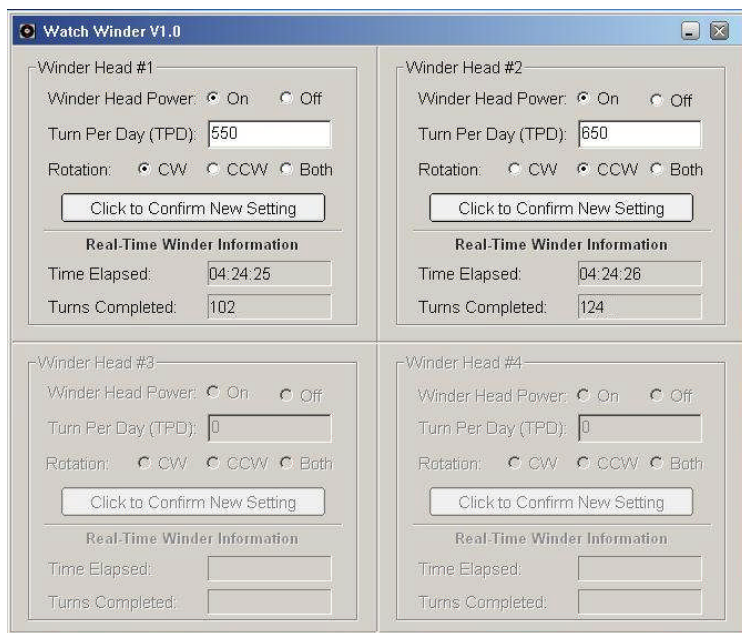
PROGRAMMING THE WINDER:

- 1) Locate the “USBWinder” icon that was automatically placed on your desktop during installation. It should look similar to (Fig. 14) below:



(Fig. 14) USBWinder Desktop Icon

- 2) **Double-Click** the icon to launch the USBWinder software. You should now see the USBWinder software screen, similar to (Fig. 15)



(Fig. 15) USBWinder Software Screenshot

WATCH PILLOWS:

The winder features locking watch pillows, which hold your automatic wristwatches safe and secure during the winding operation.

To remove a watch pillow from the winder, grasp the two protective ears of the pillow and squeeze firmly, while pulling the pillow out of the watch cup.



(Fig.3) Locking Watch Pillow

Located on the back of the watch pillow is an automatic tension adjuster, which applies gentle outward pressure on your watch band or bracelet. This adjuster has two positions, “IN” and “OUT”.

The “IN” position is used when installing a watch onto the pillow. (Fig. 4)

The “OUT” position is used once the watch has been installed onto the pillow, and holds the watch firmly in place during the winding operation. (Fig.4a)



(Fig.4) The “IN” position



(Fig.4a) The “OUT” position

To install your watch onto the pillow, simply squeeze the adjuster inward until it clicks and locks into the “IN” position. The pillow is now ready to receive your watch. (Fig.4)

Note: The procedure outlined below is the *suggested* method of installing your watch onto the pillow, as it will allow you to fit MOST watches onto the pillow **WITHOUT** having to first open the bracelet or buckle. If your wrist is very small, you may first need to open the bracelet/buckle before installing your watch onto the pillow, then secure the bracelet/buckle afterwards.

- 1) Begin by slipping the head of the watch over one of the protective ears. (The pillow adjuster should be in the “IN” position at this time) (Fig. 5)



(Fig. 5) Watch Head Slipped Over Protective Ear

- 2) Center the watch head between the two protective ears. Then center the watch band onto the adjuster. (Fig. 5a)



(Fig. 5a) Center the Watch

- 3) Once the watch is properly centered on the pillow, simply squeeze the adjuster (unlocking it), and it will spring back to the “OUT” position, holding your watch firmly in place under spring tension. (Fig.5b)



(Fig.5b) Watch Held Firmly



(Fig.5c) Watch Correctly Installed

Correct final watch positioning is shown in (Fig. 5c)

To remove the watch, simply squeeze and hold the adjuster inward, while removing your watch carefully from the pillow.

USBWinder SOFTWARE INSTALLATION:

NOTE: Install the USBwinder software **BEFORE** connecting the winder to your PC!

The USBWinder software is currently only compatible with “PC-based” operating systems. Check our website for support regarding other operating systems.

- 1) Insert the USBWinder Software disk into your PC’s CD-ROM drive.
- 2) The software “Installation Wizard” will automatically appear.
- 3) Follow the simple instructions for installing the software and driver. Click “Finish” to complete the installation.
- 4) Remove the disk from your CD-ROM drive and store it in a safe place.

CONNECTING THE WINDER:

- 1) Using the supplied **AC power adapter**, plug your winder into a power outlet.
- 2) Using the supplied **USB cable**, plug your winder into an available USB port on your computer.
- 3) **Turn ON the winder**, using the power on/off switch located on the back of the winder.
- 4) **Turn ON the LED displays**, using the LED on/off switch located on the back of the winder.
- 5) **Your winder will start to run** the factory default winding program and the LED displays will illuminate.
- 6) The “**Found New Hardware/Hardware Ready to Use**” messages will appear on your screen.
Your winder is now installed and ready to program! (Fig.13)

Note: Be Patient. It may take a moment for your computer to automatically recognize your new winder!



(Fig. 13) “Found New Hardware/Hardware Ready to Use” message

WARRANTY VOID STICKER:

There is a Warranty VOID, tamper-evident sticker located on the back panel of your winder. This sticker guarantees that your Rotolution™ winder is authentic.

It is **NOT** possible to remove this sticker from the surface of the winder without destroying it in the process. If this sticker is tampered with or destroyed, all Warranties associated with the product are null and void. See section (4) of the Limited Warranty clause located at the end of this manual (Fig.12)



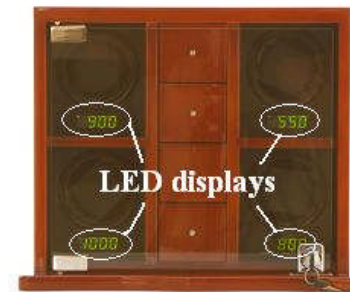
(Fig.12) Warranty Void Sticker is Tamper-Evident

To insert the watch pillow into the winder, hold the pillow by its two protective ears and slide it into the winder cup. **Squeeze the ears firmly** until the pillow snaps securely into place. The watch pillow is keyed to the watch cup, and can only be inserted one way. Your watch is now ready to be wound.

Note: BEFORE powering-on your winder, please check to make sure EACH pillow is securely snapped into place!

LED DISPLAYS:

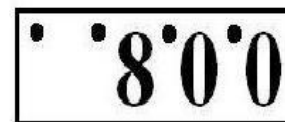
Each winder head has a corresponding LED display which allows direct viewing of the current settings and real-time winder performance. (Fig.6)



(Fig.6) LED Displays

Each LED display has **three** separate information “modes”, explained below.

- 1) The first mode is the “**TPD Setting**” mode, which displays the current Turns Per Day (TPD) setting of the winder head. This mode is represented by **four illuminated dots** at the top of the LED display, as well as the numeric TPD setting. (Fig.7)



In this example, the winder head is set to 800 Turns Per Day (TPD)

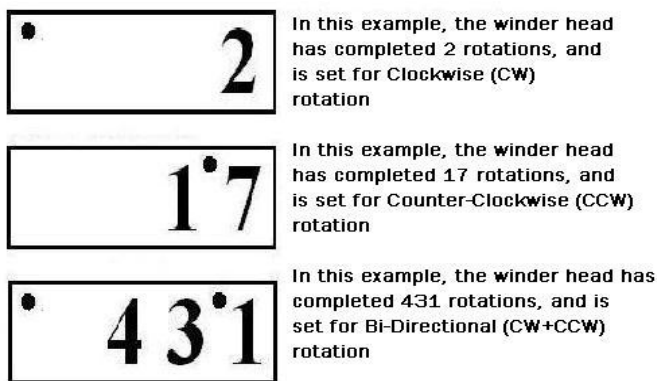


In this example, the winder head is set to 1,300 Turns Per Day (TPD)

(Fig.7) TPD Setting Mode

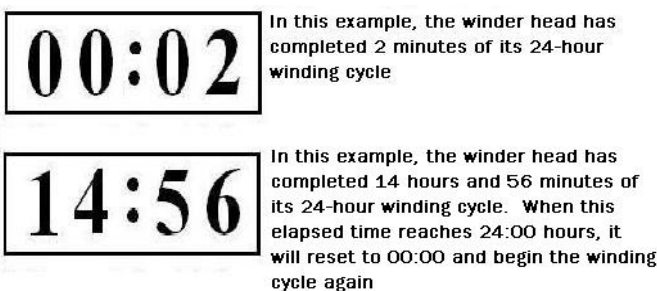
2) The second mode is the **“Turns Completed/Direction of Rotation”** mode, which displays two key pieces of information simultaneously. First, the number of turns (rotations) the winder has completed, and second, the direction of rotation that the winder is set to turn. The direction of rotation is represented by the two outer-most dots at the top of the display, while the number of turns completed is shown numerically.

A single dot illuminated in the **top left hand position** indicates a **Clockwise (CW) Only** rotation setting. A single dot illuminated in the **top right hand position** indicates a **Counter-Clockwise (CCW) Only** rotation setting. When **both top dots** are illuminated, this indicates a **Bi-Directional (CW+CCW)** rotation setting, which is comprised of a clockwise rotation, followed by a counter-clockwise rotation. (Fig.8)



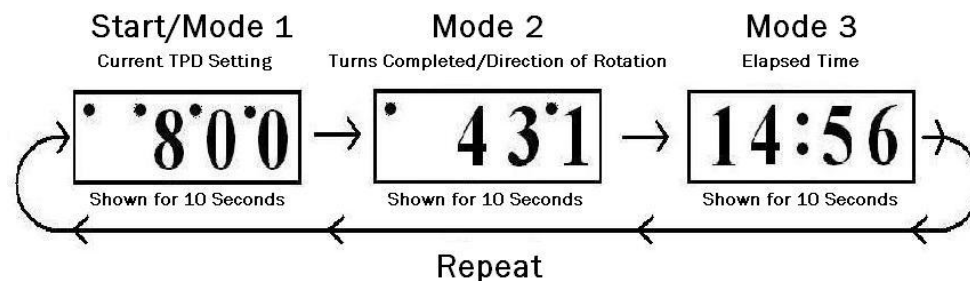
(Fig.8) Turns Completed/Winder Direction Mode

3) The third mode is the **“Elapsed Time”** mode, which displays the accumulated time that the winder head has been running within its 24-hour winding cycle. Elapsed time is shown in 24-hour time format. Time resets to zero after the winder completes a 24-hour winding cycle. This mode is represented in 24-hour time as “xx:xx”. When the winder reaches 24-hours of operation, the elapsed time resets to zero, and the winding cycle starts over again. (Fig.9)



(Fig.9) Elapsed Time Mode

Each of these information modes is displayed separately for **10 seconds**, one after another, and then the whole display cycle repeats itself. This allows you to see all winder settings and real-time performance at a glance. A visual representation of this process is shown below. (Fig.10)



The example above shows an 800 TPD winder head setting, with 431 bi-directional rotations, with an elapsed time of 14 hours and 56 minutes out of the 24-hour winding cycle

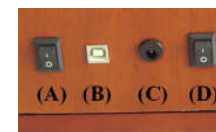
(Fig. 10) Display Switches Modes Every 10 seconds

ADDITIONAL FEATURES:

Some models feature pull-out drawers for storing extra watches, jewelry, etc. Models may also include soft watch pillows sized to fit these drawers. These pillows can be used to hold watches that are not being wound.

WINDER BACK PANEL:

Looking at the back panel of the winder, from left to right, we find the following components: (Fig.11)



(Fig.11) Winder Back Panel View

- (A). Power ON/OFF switch – this switch turns your winder off and on.
- (B). USB connection – this is where you plug the USB cable into the winder for programming, or for powering the winder via the USB cable.
- (C). AC Power – this is where the supplied AC power adapter plugs in, providing AC power to the winder.
- (D). LED Display ON/OFF switch – this switch turns all LED displays on or off. The winder will continue to operate, but the LED displays are turned off.